

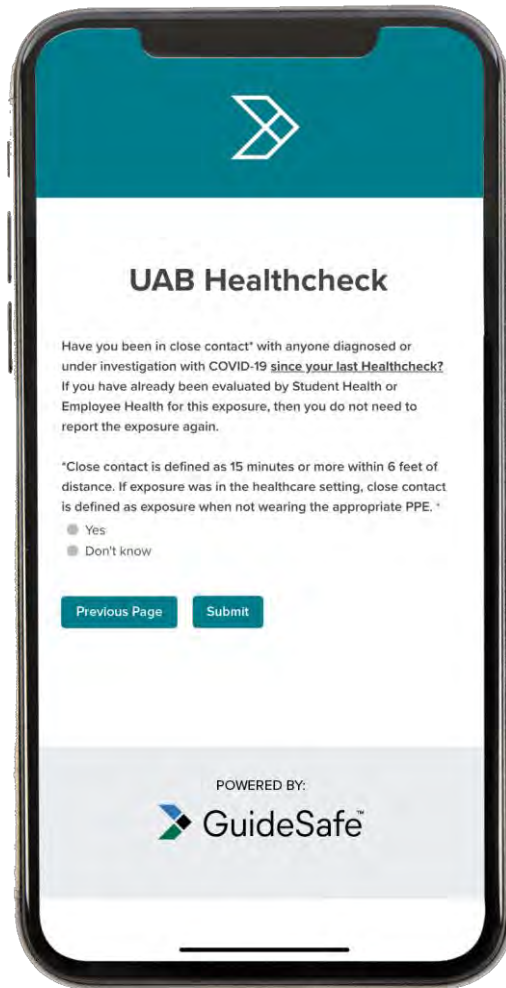
Athens-State Passport: Your “Pass” to Campus



GuideSafe™

Athens-State Passport is being used to facilitate access to campus by faculty, staff, and students. After completing the Athens-State Healthcheck, the Athens-State Passport is the “pass” that will be shown at the entry checkpoints to gain access to campus.





Athens-State Passport is used to facilitate access to campus for faculty, staff, and students.

Event attendees will complete Athens-State Healthcheck, a COVID-19 assessment tool, prior to entering.



ATHENS-STATE PASSPORT



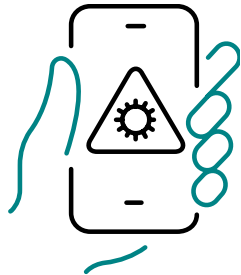
PROTOTYPE

After completing Athens-State Healthcheck, the user will be issued a passport for campus entry.

Athens-State Passport is issued based on a proprietary risk algorithm and will show if the user is clear to enter campus.



Athens-State Passport ensures compliance with reporting requirements by denying campus access to individuals who have not completed the required assessment (Athens-State Healthcheck).



User completes **Healthcheck**, a COVID-19 assessment tool.



User assigned a unique passport number indicating status for event.



Stay Safe & Healthy!

Please ensure you complete the Athens-State Healthcheck, a COVID-19 assessment tool. Symptoms and exposure should be reported **daily** at www.athens.edu/healthcheck.

For the latest re-entry guidelines and updates, please visit www.athens.edu/return.



GuideSafe™