



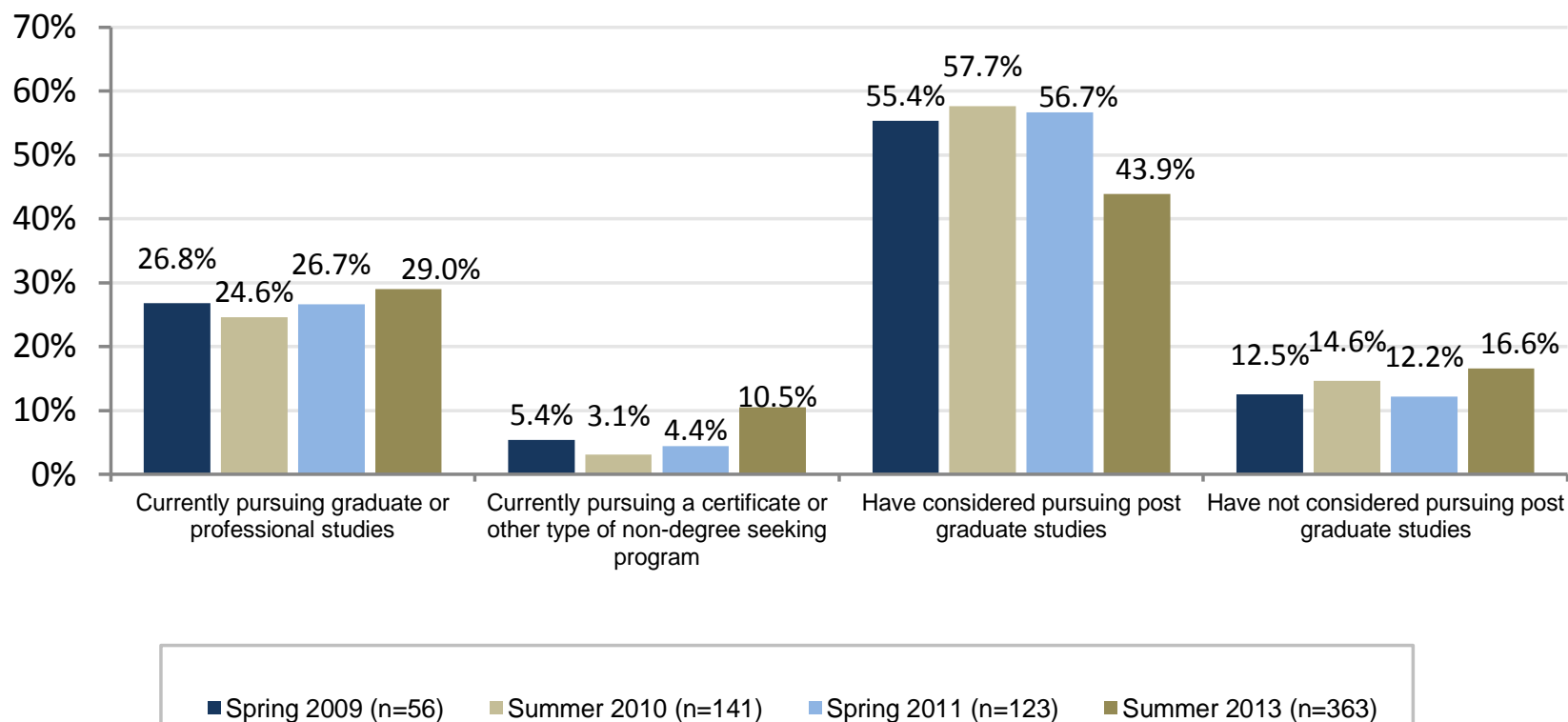
Graduate Follow-Up Survey Results 2009 – 2013



Office of Institutional Research and Assessment

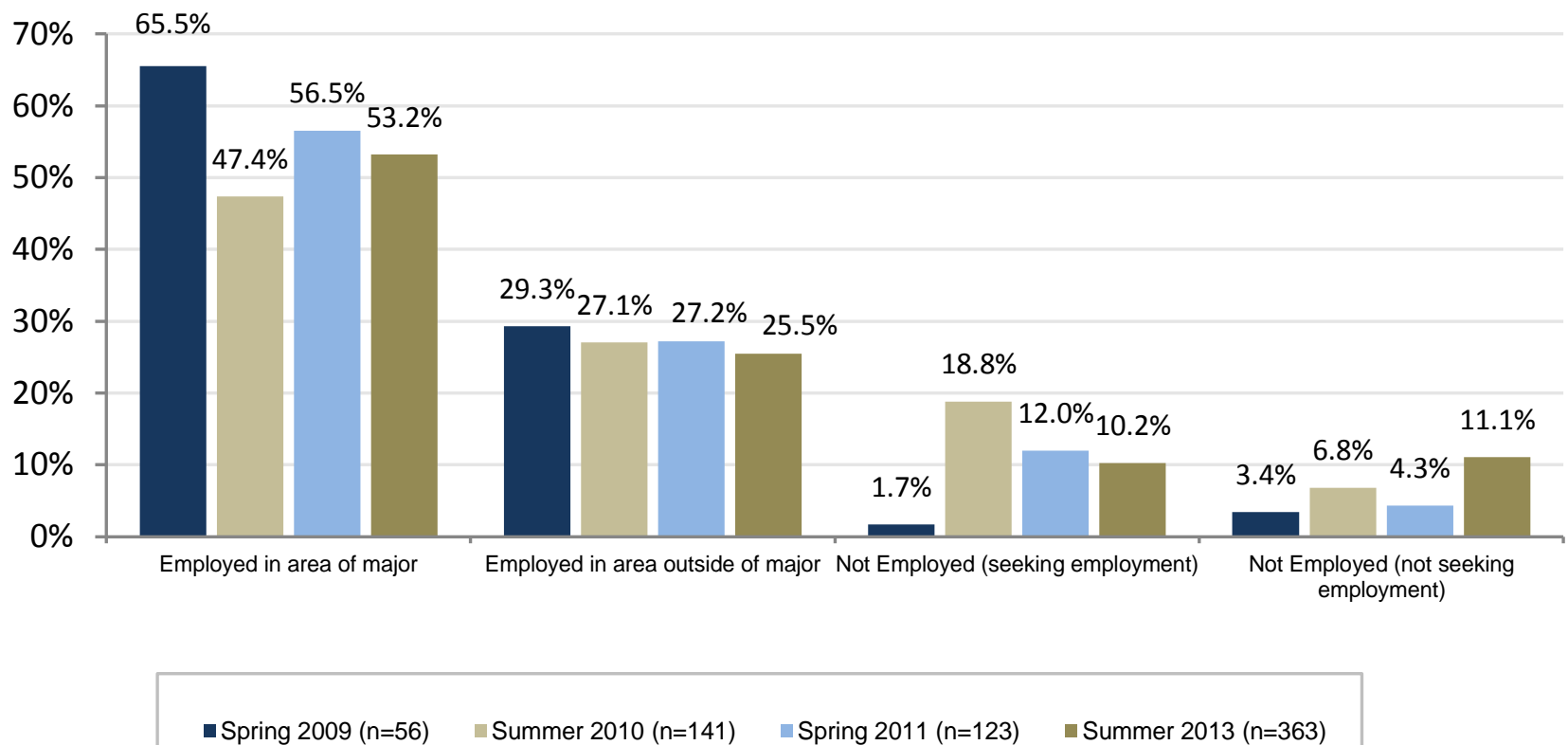
Graduate Follow-Up Survey Results

Continuing Education: Post Graduate Studies



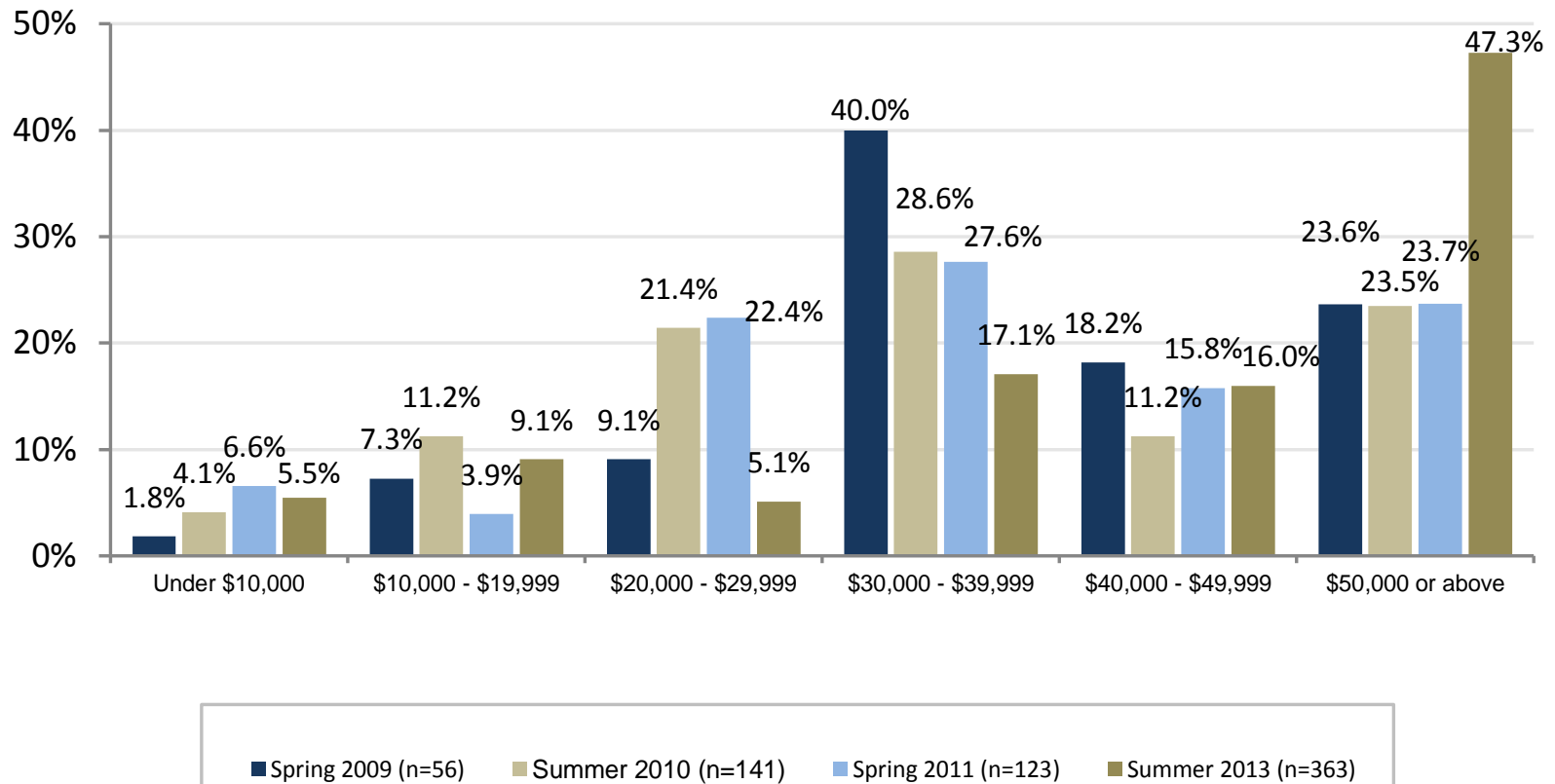
Graduate Follow-Up Survey Results

Employment Status



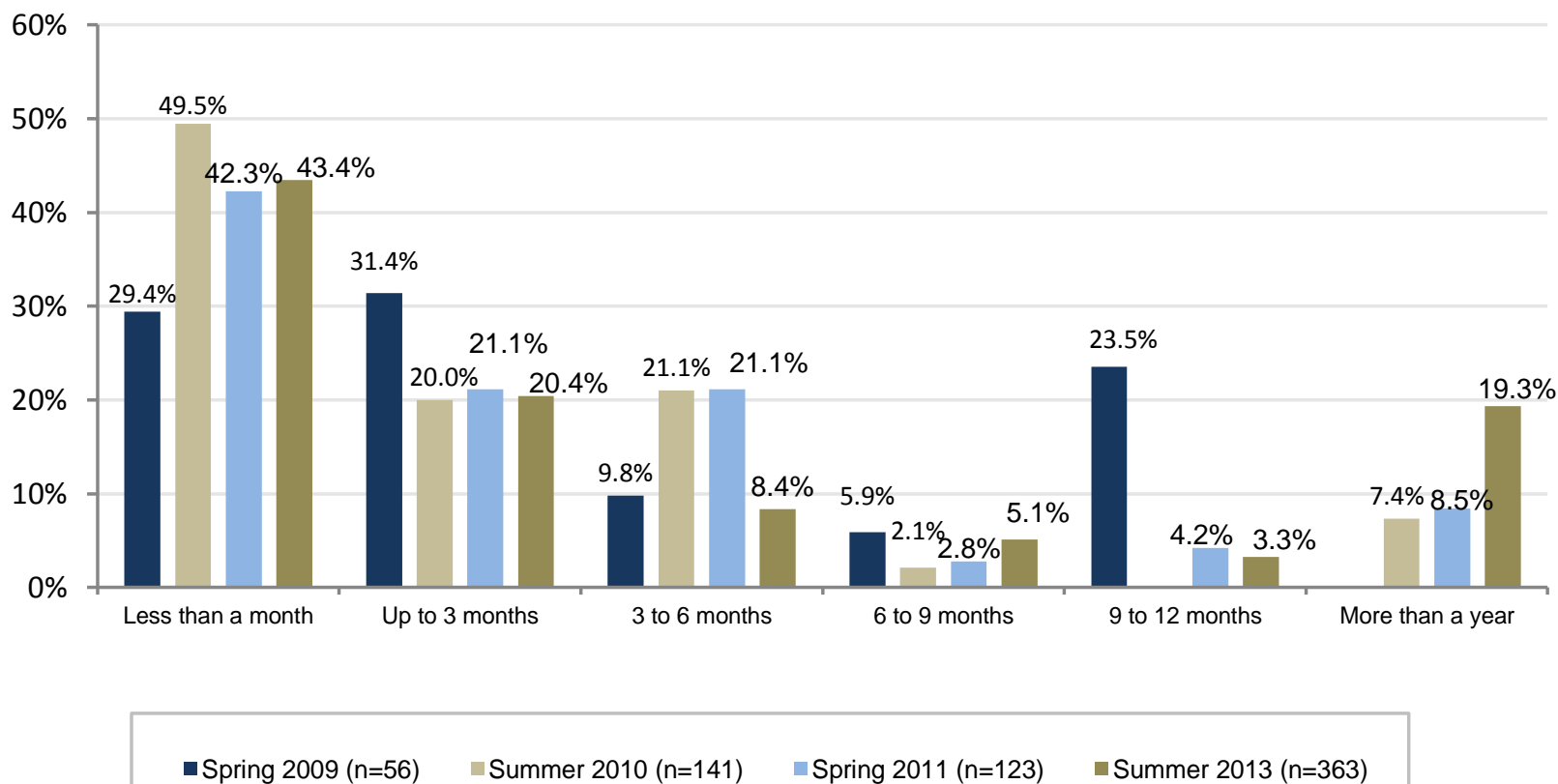
Graduate Follow-Up Survey Results

Annual Compensation



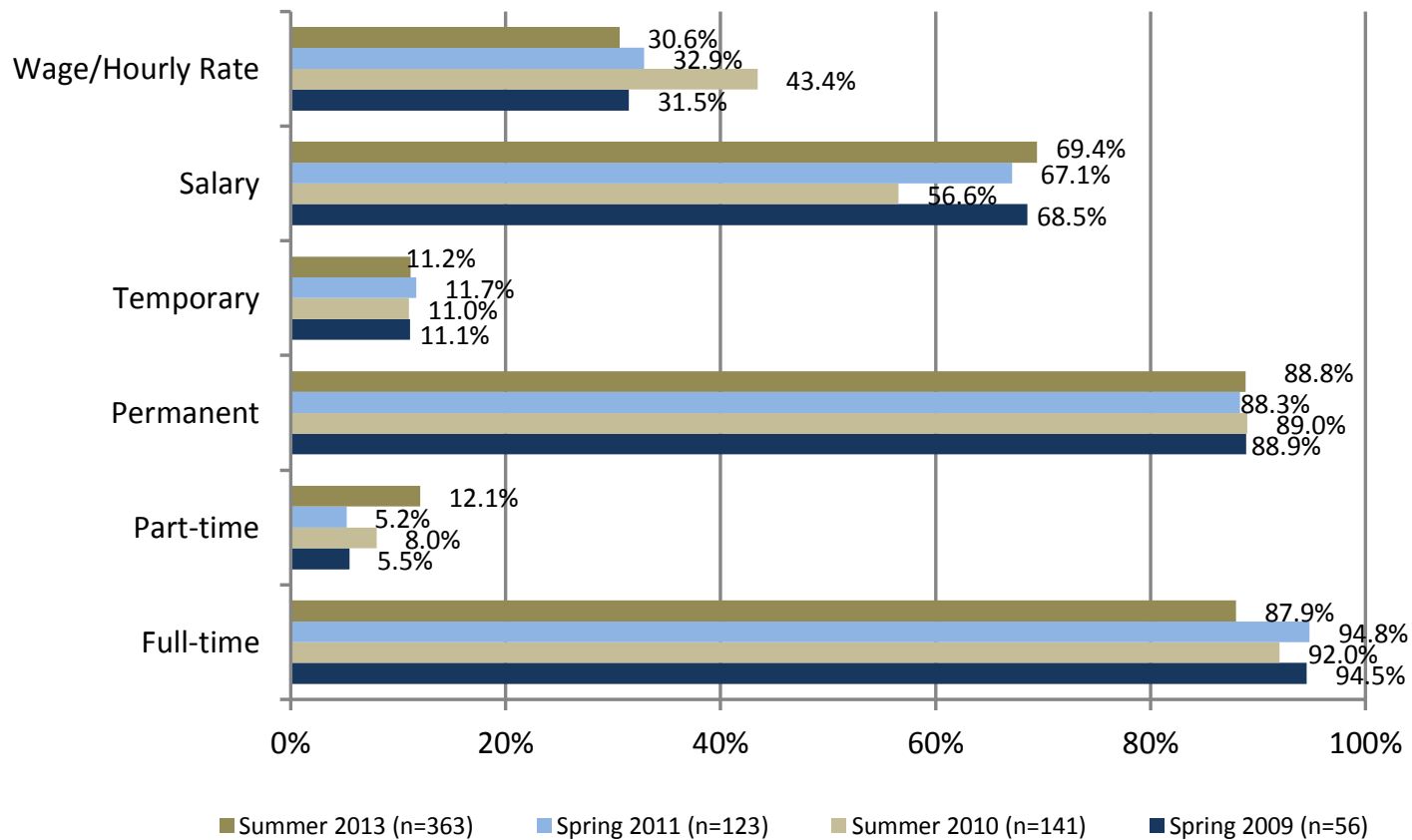
Graduate Follow-Up Survey Results

Time Taken to Find Job



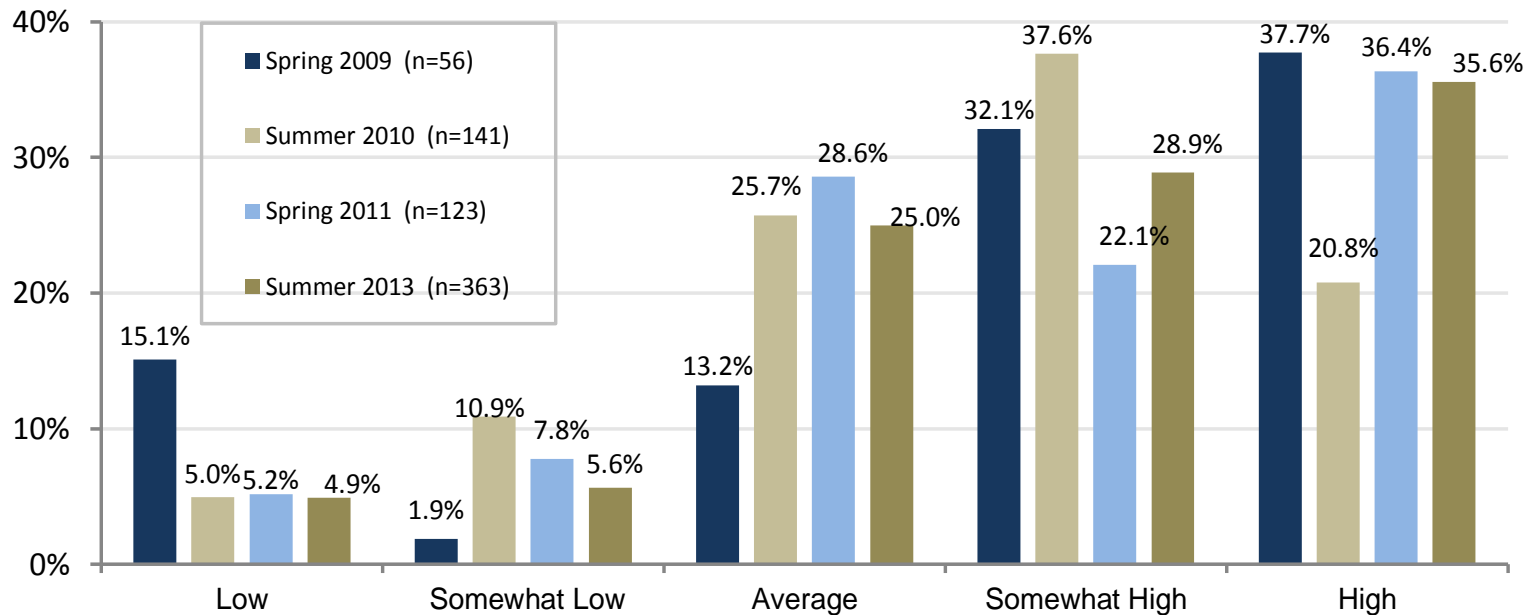
Graduate Follow-Up Survey Results

Employment Position Details



Graduate Follow-Up Survey Results

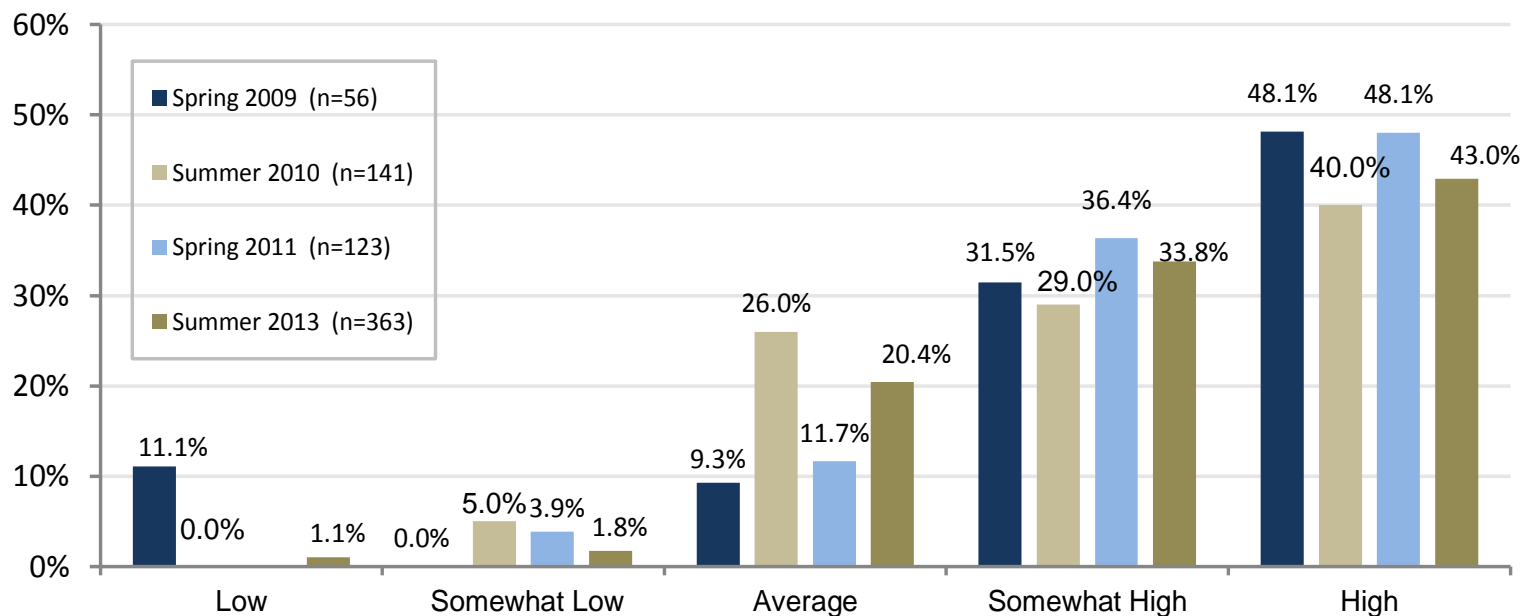
Knowledge of concepts and practices in your major as they relate to your job



How effectively your education at Athens State has assisted you in performing your job successfully

Graduate Follow-Up Survey Results

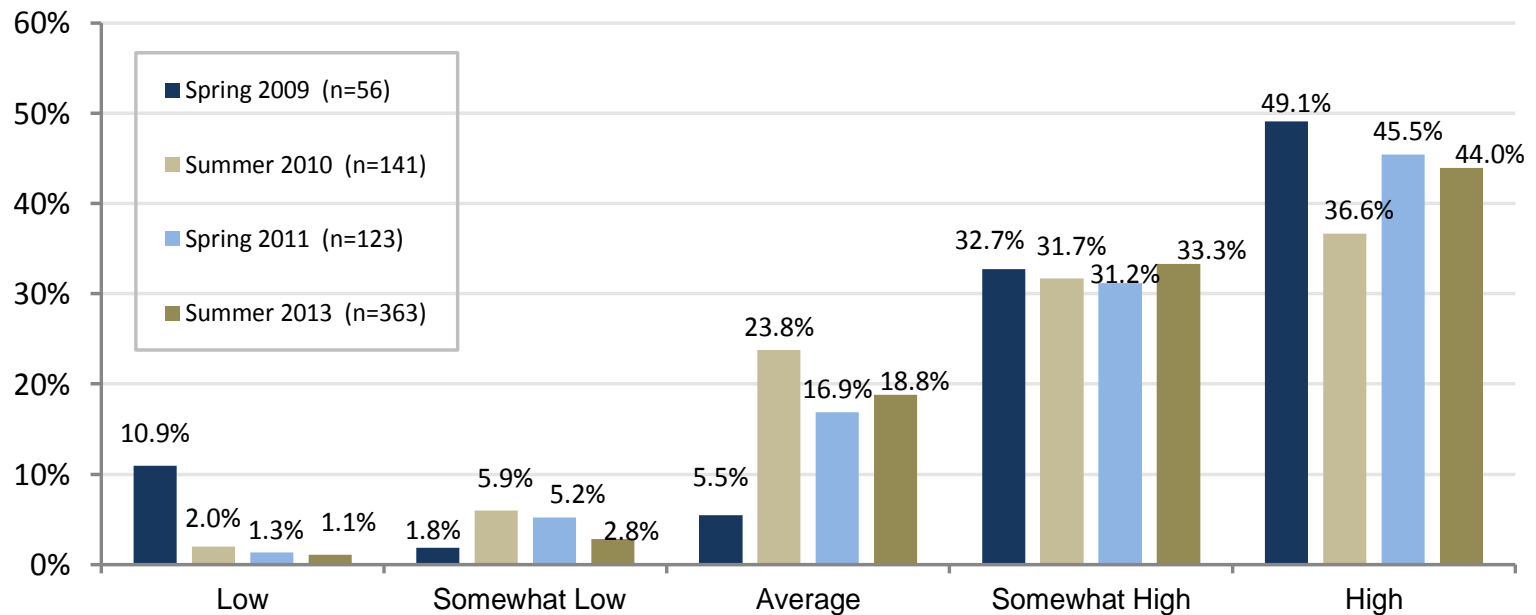
Written and oral communication skills



How effectively your education at Athens State has assisted you in performing your job successfully

Graduate Follow-Up Survey Results

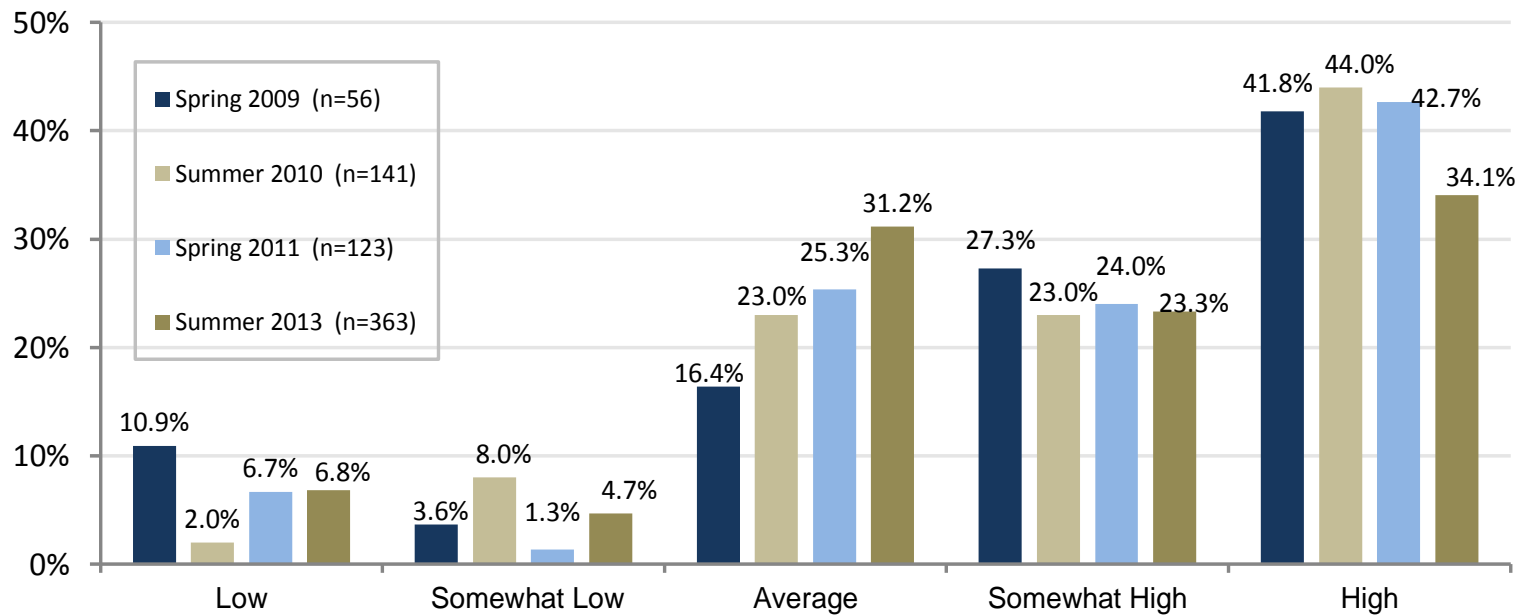
Analytical and problem-solving skills



How effectively your education at Athens State has assisted you in performing your job successfully

Graduate Follow-Up Survey Results

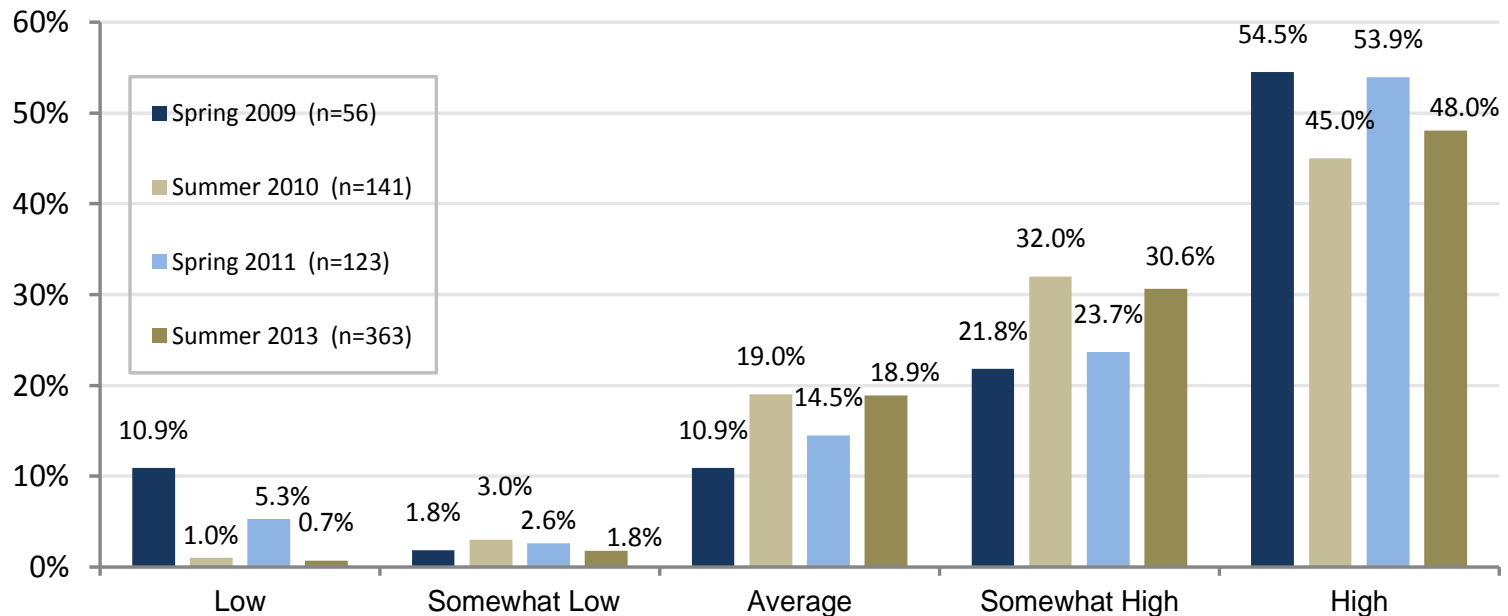
Computer proficiency



How effectively your education at Athens State has assisted you in performing your job successfully

Graduate Follow-Up Survey Results

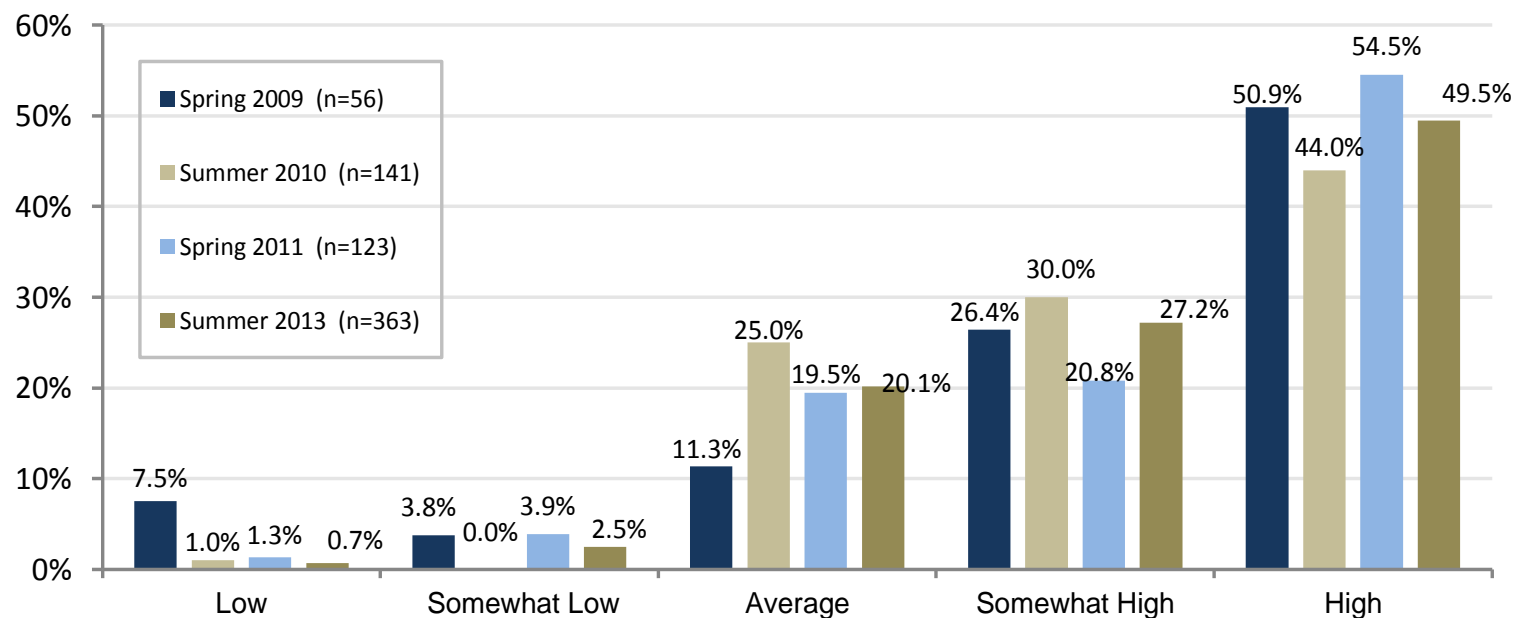
Ability to work effectively with people with different backgrounds and opinions



How effectively your education at Athens State has assisted you in performing your job successfully

Graduate Follow-Up Survey Results

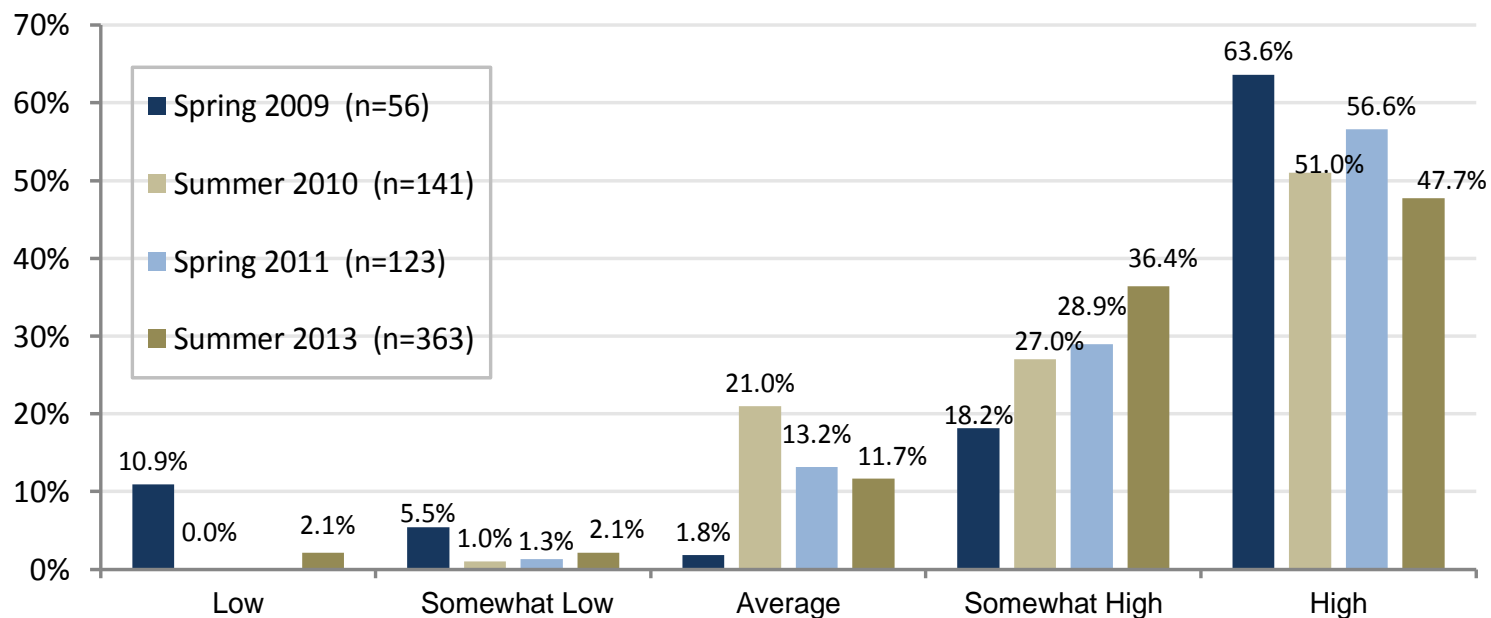
Time management skills to meet deadlines



How effectively your education at Athens State has assisted you in performing your job successfully

Graduate Follow-Up Survey Results

Overall education from Athens State University



How effectively your education at Athens State has assisted you in performing your job successfully

Comparison of 2009 and 2010 Graduation Follow-Up Survey

The Spring 2009 and Summer 2010 versions of the Graduate Follow-Up Survey had different answer choices for the questions dealing with job skills and the effectiveness of the student's education from ASU in assisting with those skills. For the Spring 2009 GFS, the possible answers were: 1) *Very Ineffective*, 2) *Somewhat Ineffective*, 3) *No Difference*, 4) *Somewhat Effective*, and 5) *Very Effective*. For the Summer 2010 GFS, the possible answers (in rating the effectiveness) were: 1) *Low*, 2) *Somewhat Low*, 3) *Average*, 4) *Somewhat High*, and 5) *High*. The percentage of graduates choosing each level (lowest to highest) of these answer categories varied between the two terms. There is a possibility that the change in terminology had an effect on the results.